



# Lona III

1907

Re-birth of a Classic Yacht  
2011 - 2016











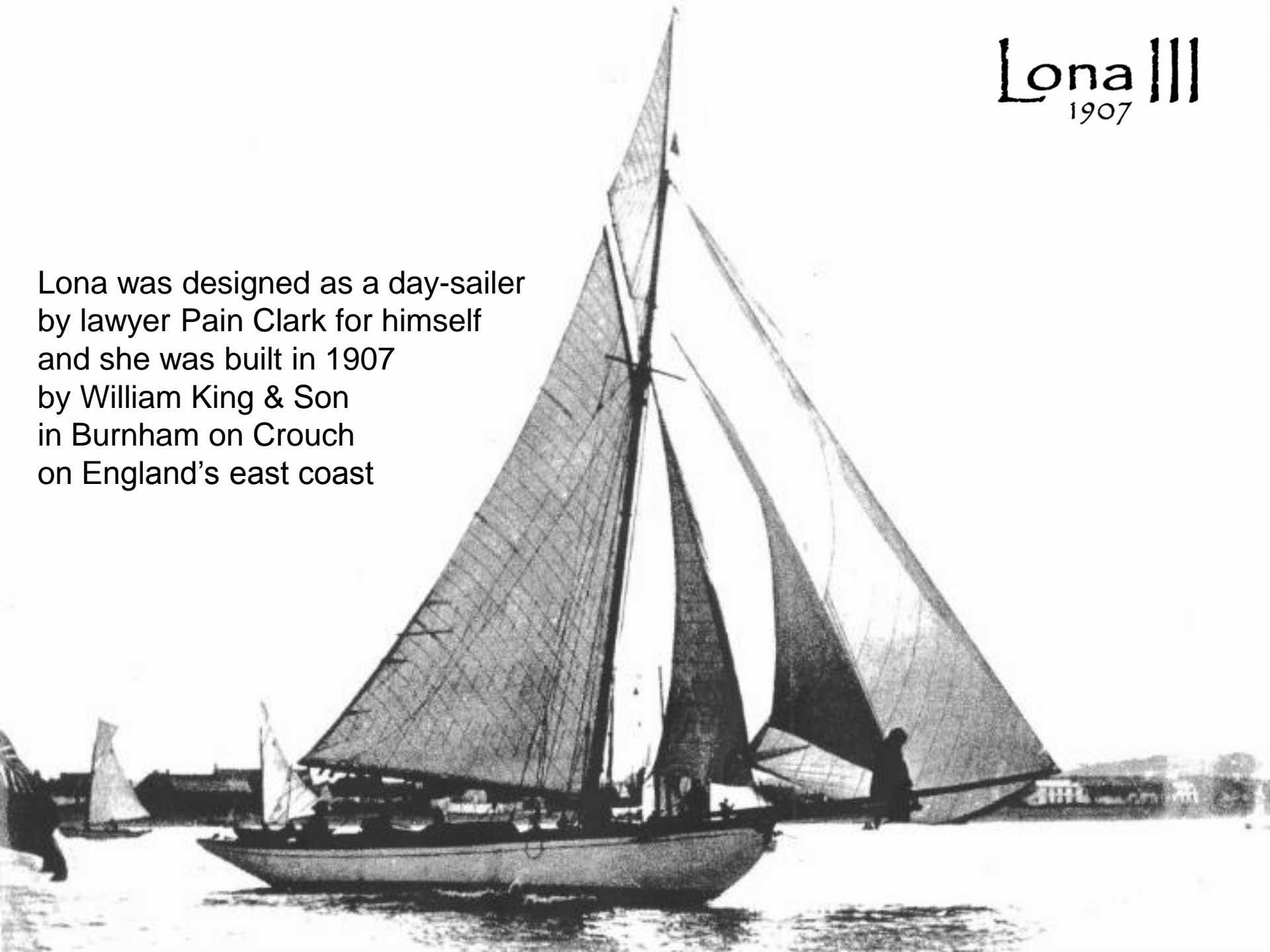




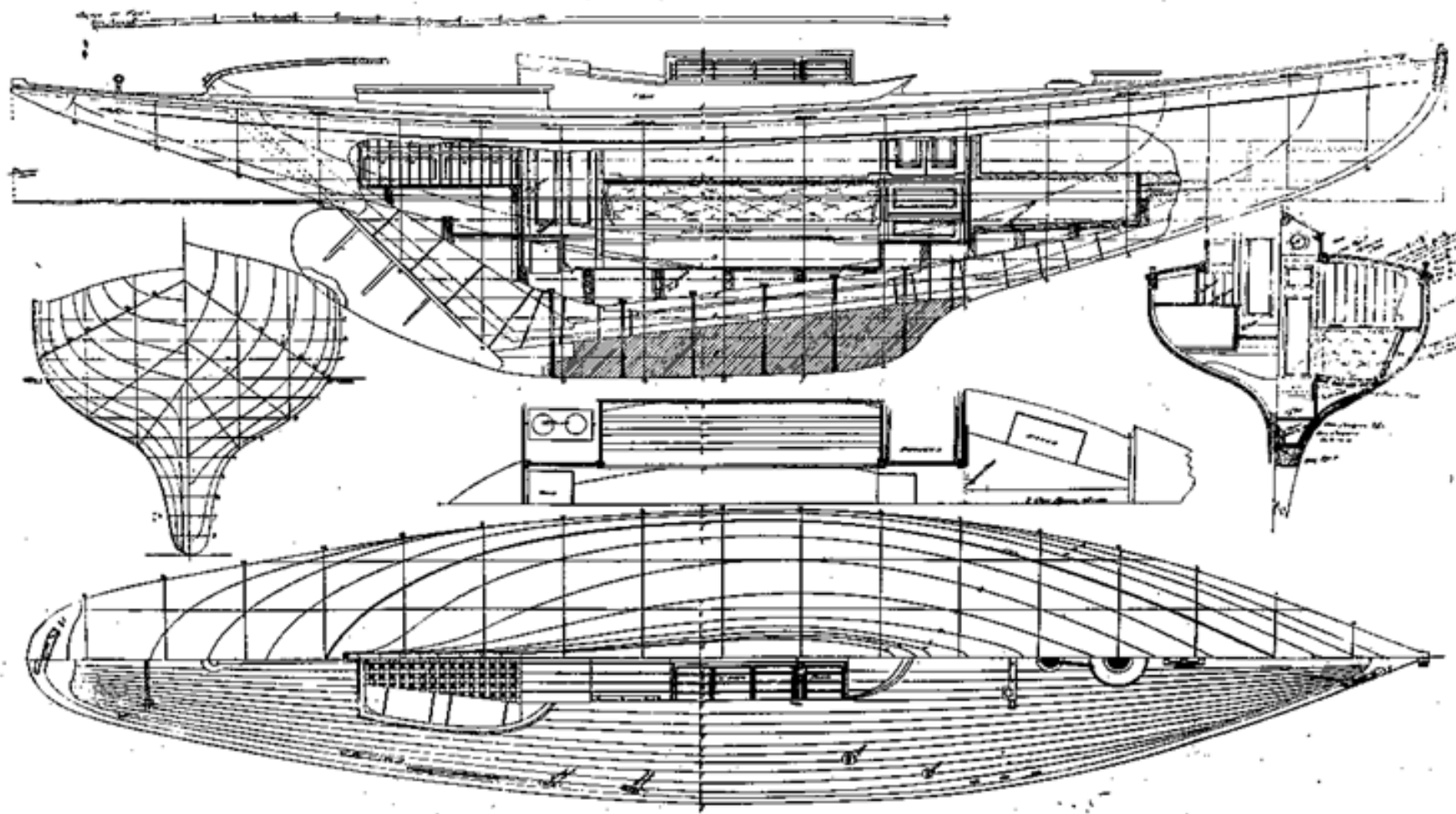
# Lona III

1907

Lona was designed as a day-sailer  
by lawyer Pain Clark for himself  
and she was built in 1907  
by William King & Son  
in Burnham on Crouch  
on England's east coast







"LONG III", 7 tons.

She was built as a gaff cutter

... became a yawl

... and then turned Marconi sloop





**We found her beginning 2011  
in Walsoorden in The Netherlands**





**A beauty in need of a caretaker!**









Dismantling and emptying the hull took us a year  
and revealed the healthy centerline and planking






# Lona III

1907

The ribs however were a different matter:  
we replaced more than half of the 140 steamed original oak ribs with new laminated ones








Dave did much of that  
and in the process taught  
me how it is done







A woman with dark hair and glasses, wearing a blue sweater and blue gloves, is working on a large, curved wooden structure. She is reaching up with her right hand to touch or adjust the wood. The structure is made of many layers of wood, with some areas showing a rough, greyish material. The background shows a workshop with various tools and equipment.

The seams had become bone-hard:  
they were replaced by a modern material









After 3 years Lona's hull was completed,  
stiffened with extra stringers and knees,  
with a new engine bed, prop shaft and rudder





Installing the new  
Yanmar engine



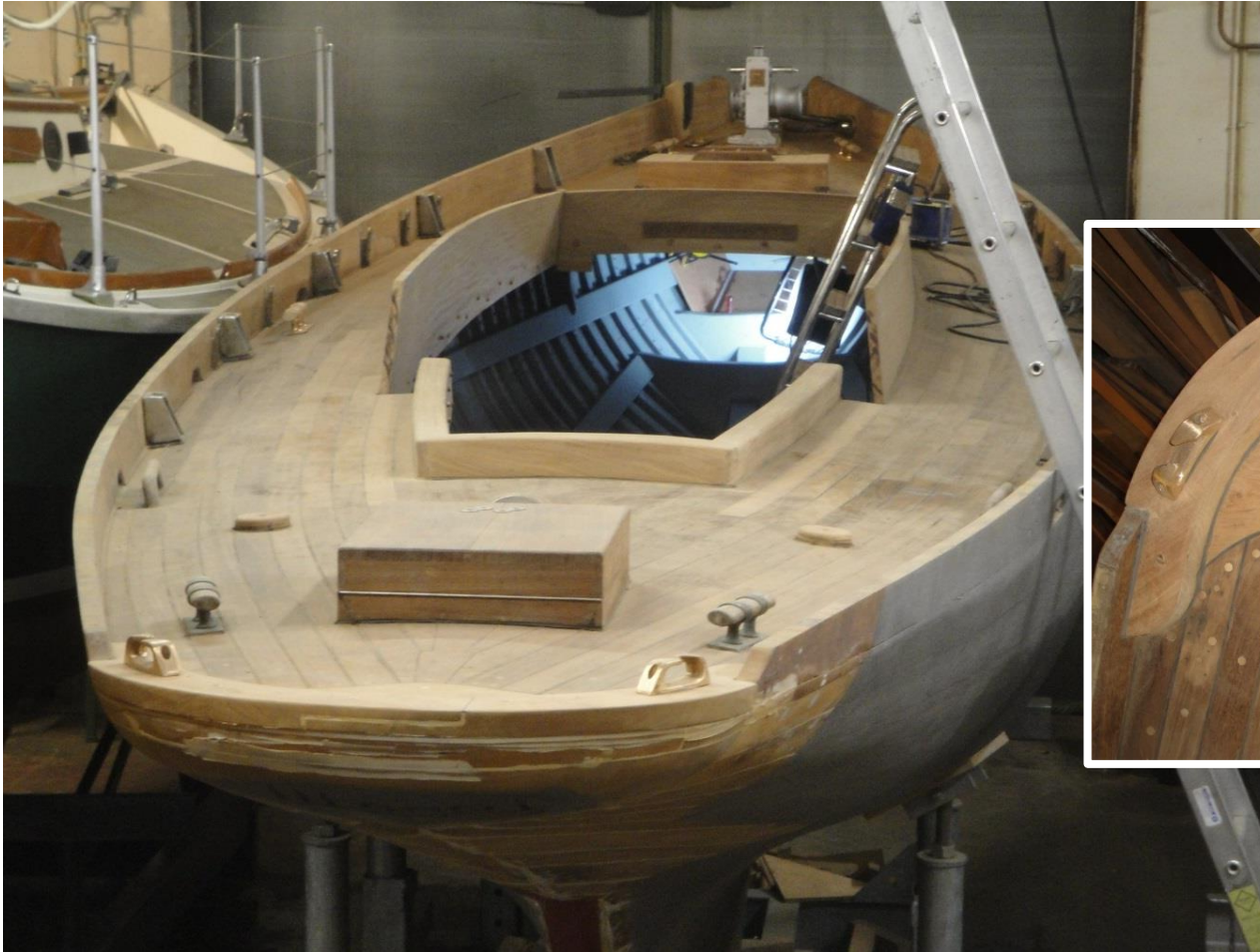
Roof and cockpit  
are minimized



Re-installing the  
restored skylight



Chiseling her name  
in the new transom



Lona's elegant hull-shape and sheerline with wide side-decks have re-appeared



After 4 years





After 4 years:  
her first time out of the dark again!







The interior leaves the hull construction maximally exposed





Dr Steel (now 94 years old) raced and cruised Lona for 30 years  
He came visiting the yard at Tradewind Yachts a number of times



A white sailboat is mounted on a metal stand in a cobblestone yard. A new, long, light-colored wooden mast is being installed, leaning against the boat. The mast is equipped with various pulleys and rigging components. A blue step ladder is positioned next to the mast. In the background, a brick building and another boat are visible. The text "Installing the all-new rig" is overlaid on the image.





Lona III  
1907



SS Oakford was built  
in 1900 and stranded  
on Texel in 1934  
with loss of all hands



Steamship Oakford's compass



And finally 16 July 2016 after 5.5 years  
**Lona's re-birth !**









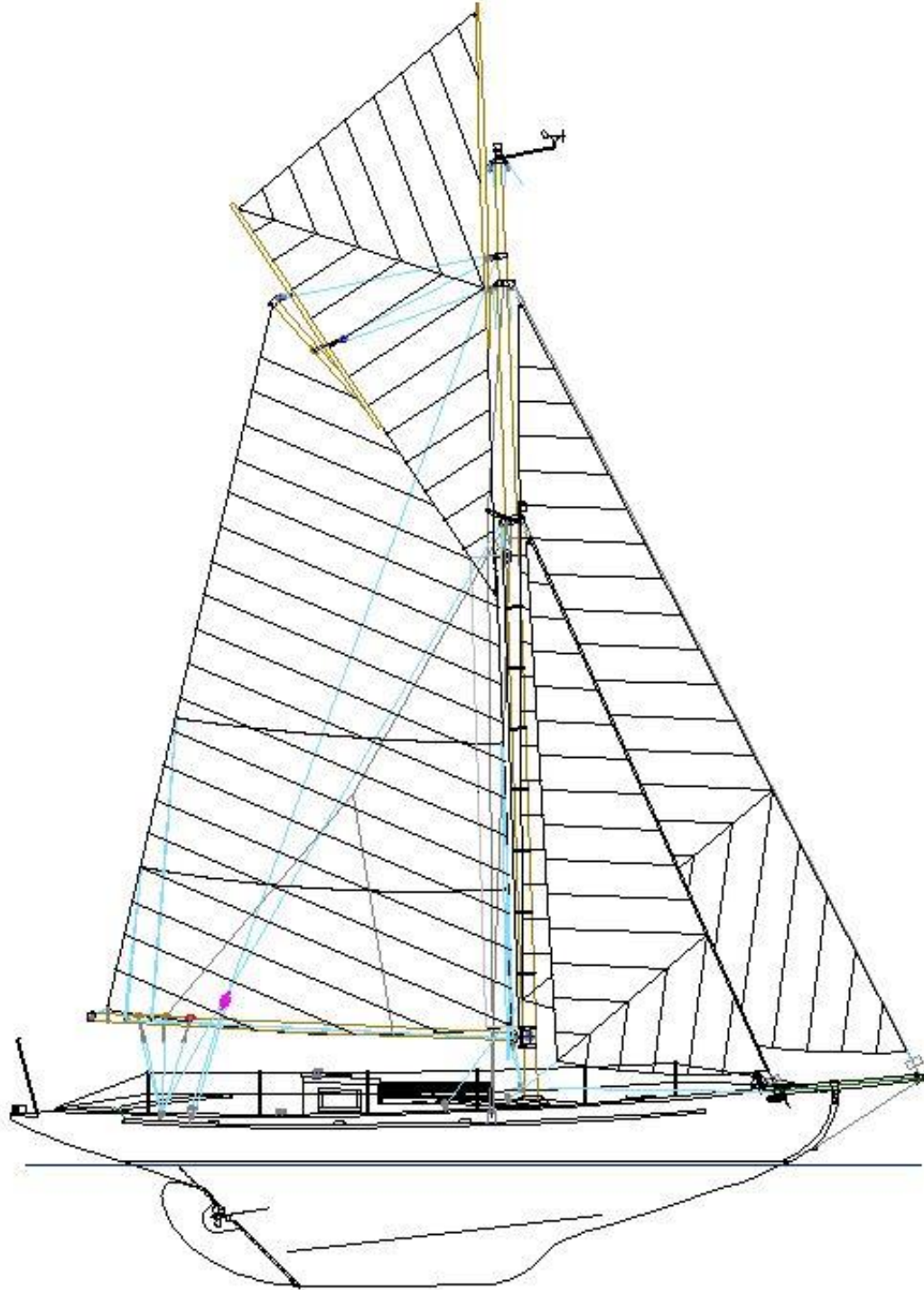


Perfect lines - for her 110 years!









The gorgeous gaff rig  
is a new design by  
Hoek Design





The new rig respects Lona's era but uses the new insights in aerodynamics: with a shorter boom, high aspect sails, and hollow spars.

For single-handed sailing we have furlers and winches on board.

After the first months of sailing we replaced the bowprit by a 75cm longer one for even better balance upwind.





After some minor tweaking the rig now performs to perfection, also thanks to the magnificent North Classic Sails.



Lona proved herself as a capable sea-boat, although heeling as hard as predicted. She loves sailing seriously, but in her own wet fashion!















Lona  
1907



Bart Carpentier  
bart.carpentier@outlook.be  
cellphone +32 470 99 99 82  
<http://bartcarpentier.wix.com/lona3>